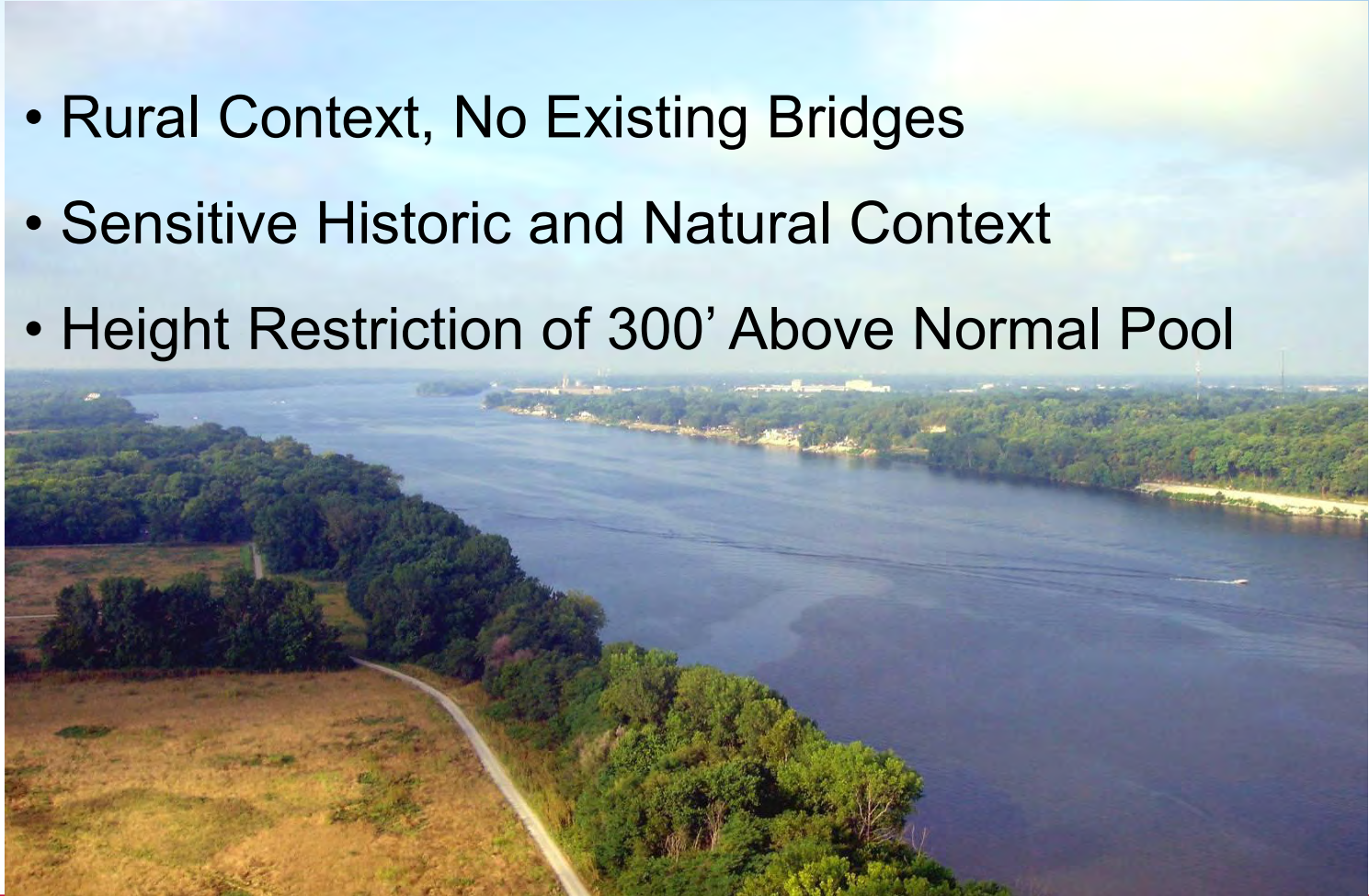


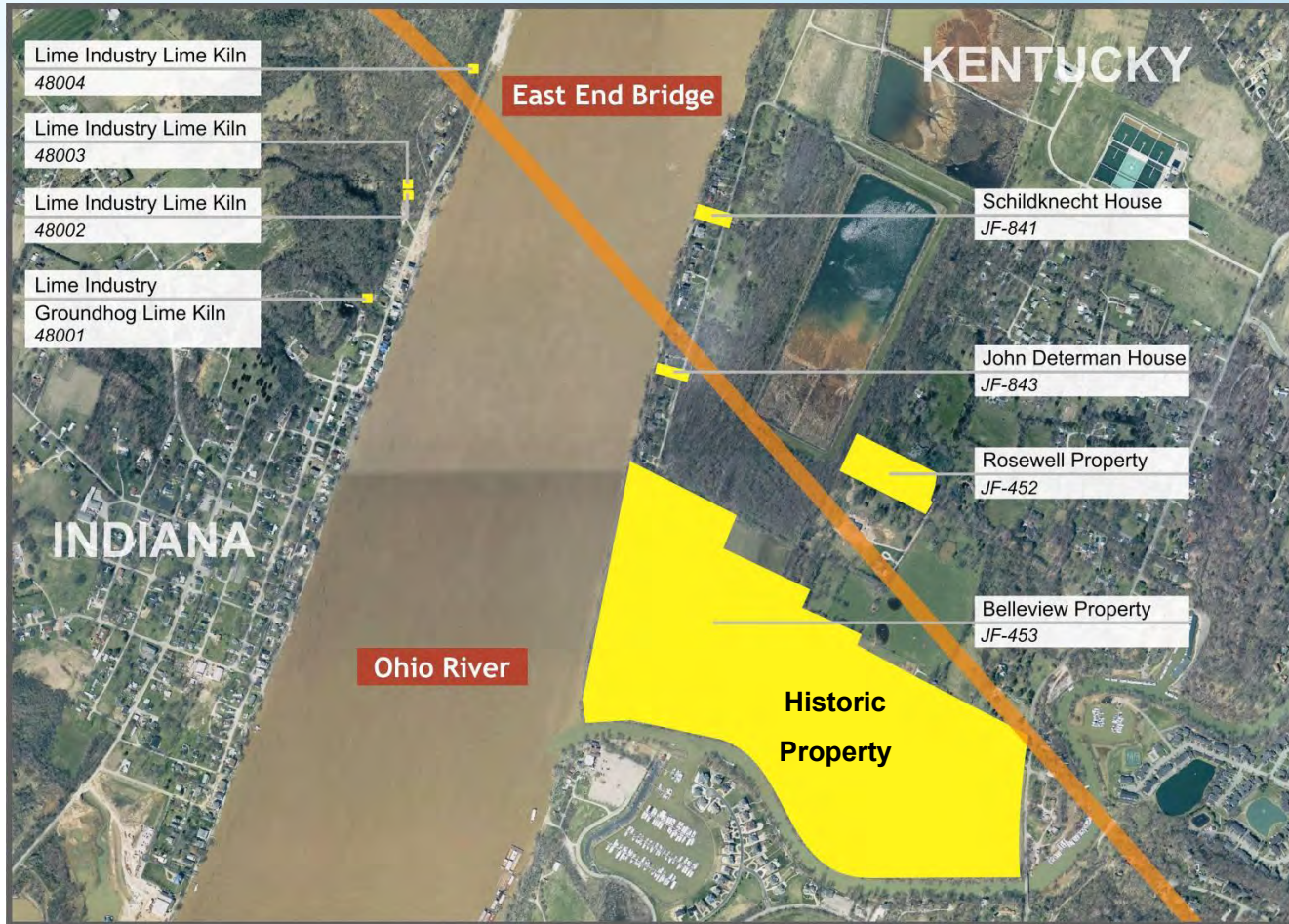


Bridge Site

- Rural Context, No Existing Bridges
- Sensitive Historic and Natural Context
- Height Restriction of 300' Above Normal Pool



Alignment Crossing River



MOA Commitments From EIS

- Bridge design with sensitivity to the rural historic setting.
- Aesthetic treatments to surfaces, structures, etc.
- Minimize roadway and aesthetic lighting dispersion.
- Bridge deck runoff collected and treated.
- Minimize adverse noise effect.
- Inclusion of historic preservation professionals.

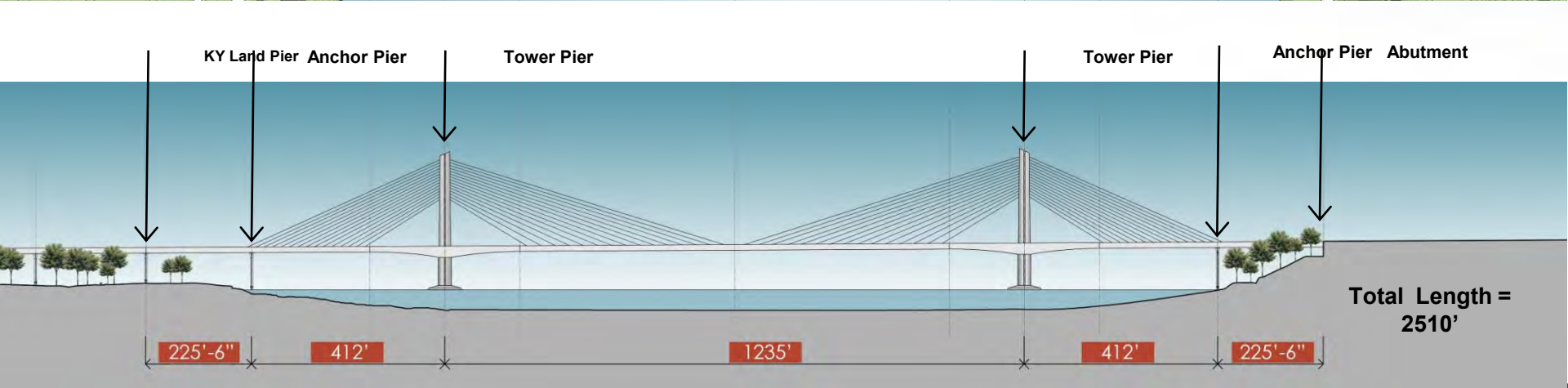
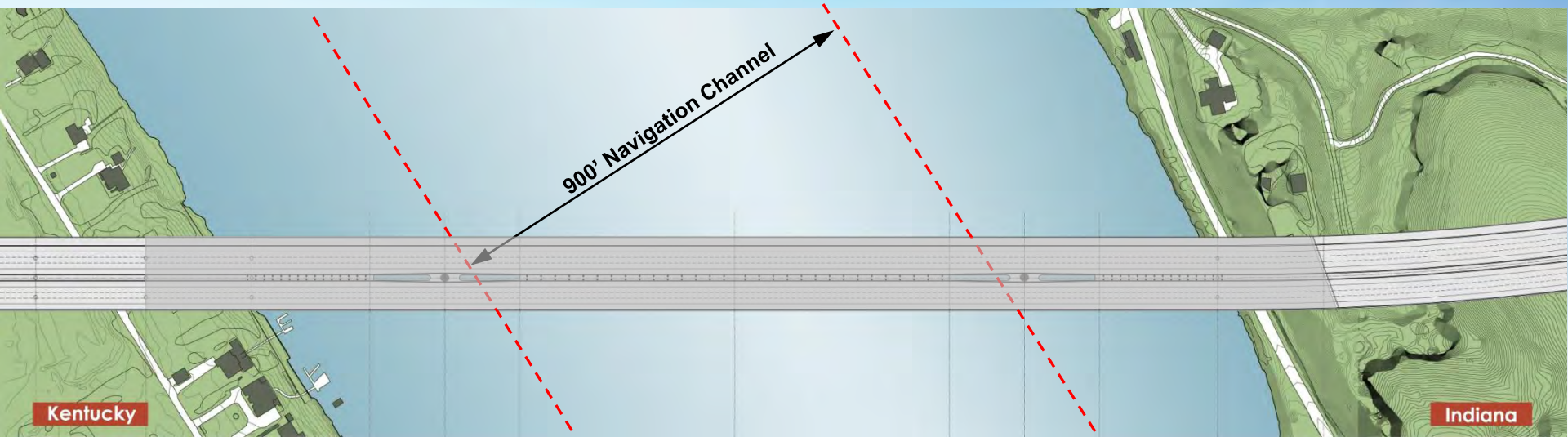
Bridge Type Selection

- 4 Step Public Process
- 15 Bridge Type Concepts Considered - trusses, arches, and cable-stayed
- 3 Bridge Types Carried to a Public Vote
- Final Selection By 14-Person Executive Committee Including Governors of Indiana and Kentucky

Selected Bridge Type



Current Span Arrangement



Looking Downstream



View from Indiana Shoreline



Driver's Perspective



View of Walkway / Bike Path



Project Information Collected

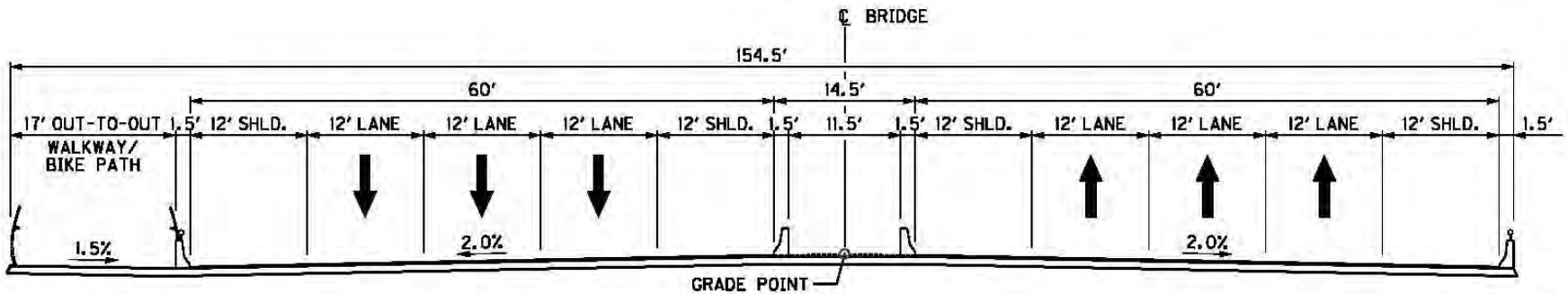
- Geotechnical – Drilling and Testing Completed
- Hydraulic Model / Scour Analysis
- Navigation Simulations Completed
- Bridge Design Criteria
- Architectural Design Guidelines
- Wind Climate Analysis

Major Construction Quantities

- Concrete = 58,500 cubic yards
- Reinforcing Steel = 11,000,000 lbs.
- Steel Box Girder = 12,500,000 lbs.
- Steel Floorbeam / Edge Beam = 6,400,000 lbs.
- Post Tensioning Strands = 2,600,000 lbs.
- Stay Cable Strands = 2,800,000 lbs.
- Cable Connections = 2,900,000 lbs.
- Drilled Shafts = 3,700 vertical feet
- Marine Support

Current Bridge Section

- 154.5 feet wide
 - 6 lanes with full 12' shoulders
 - 17 foot wide walkway / bikepath (out to out)

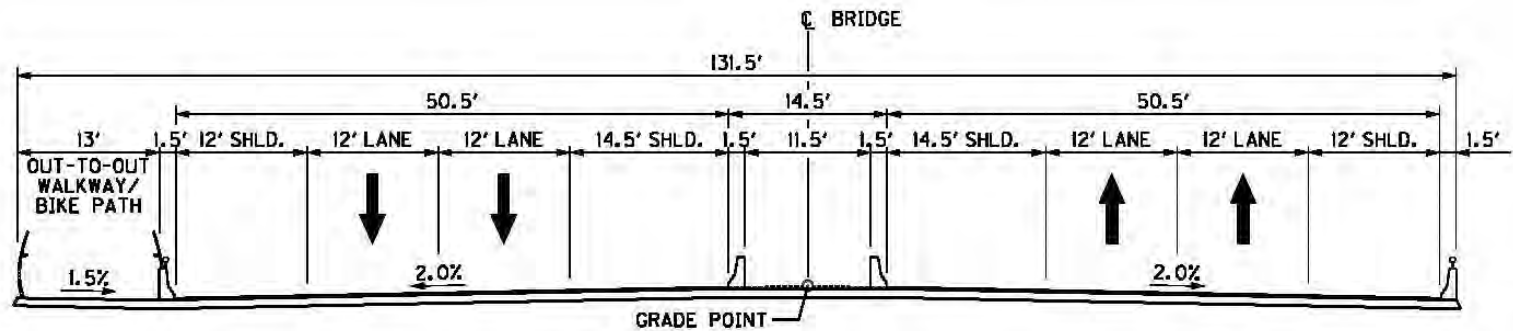


Proposed Bridge Design Revision

- 131.5 feet wide (reduction of 23')
 - 4 lanes with full 12' shoulders (initial)
 - 6 lanes with reduced shoulders (ultimate)
 - 13 foot wide walkway / bikepath (out to out)
- No Change in Bridge Type
- No Change in Bridge Architecture

Proposed Bridge Design Revision

- 4 lanes with full 12' shoulders (initial)



- 6 lanes with reduced shoulders (ultimate)

