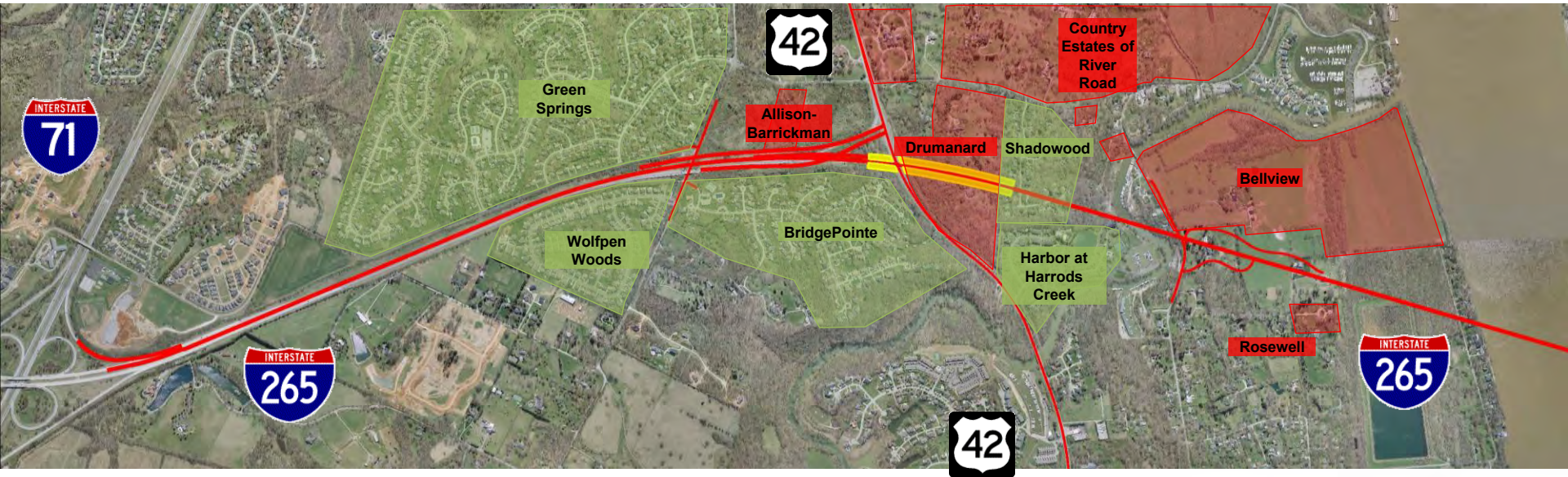


Kentucky East End – Section 4

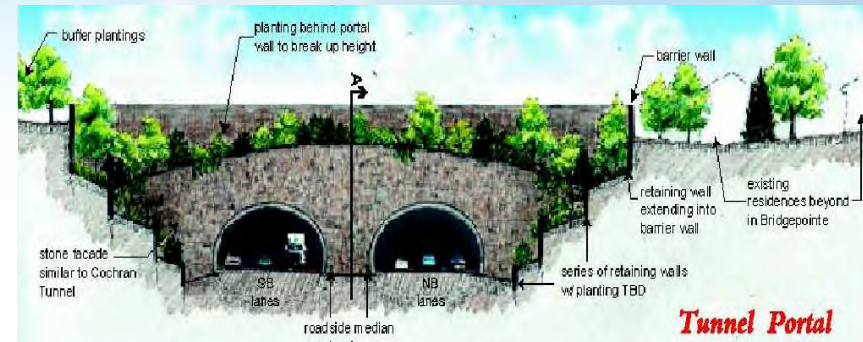


Kentucky East End – Section 4

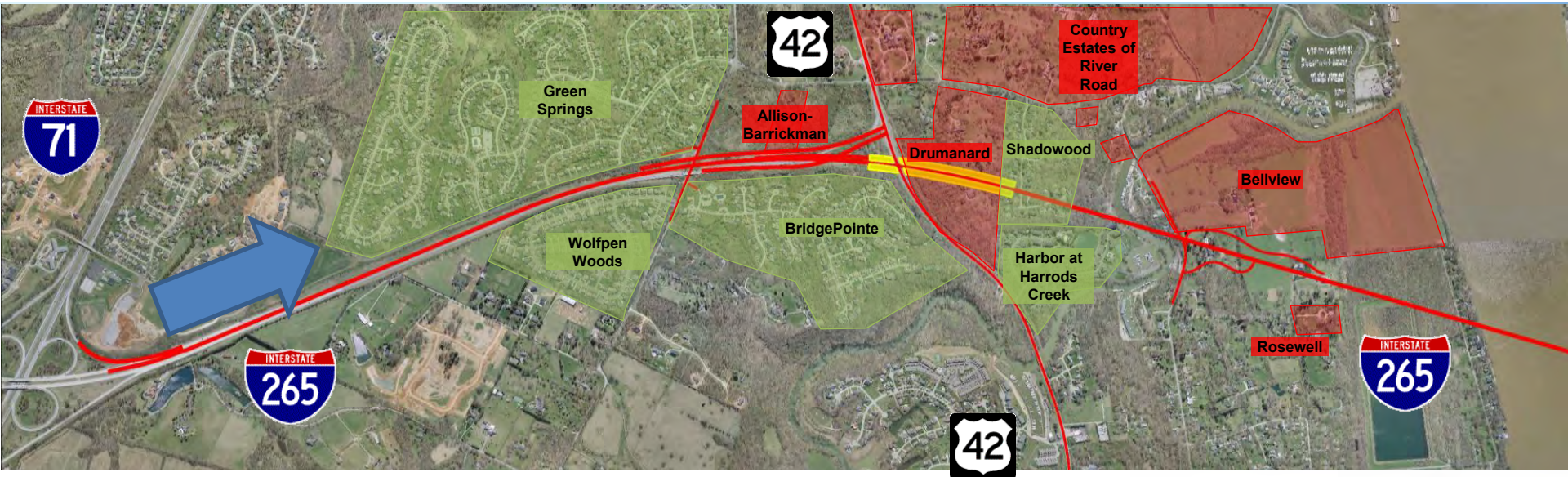


Record of Decision Commitments

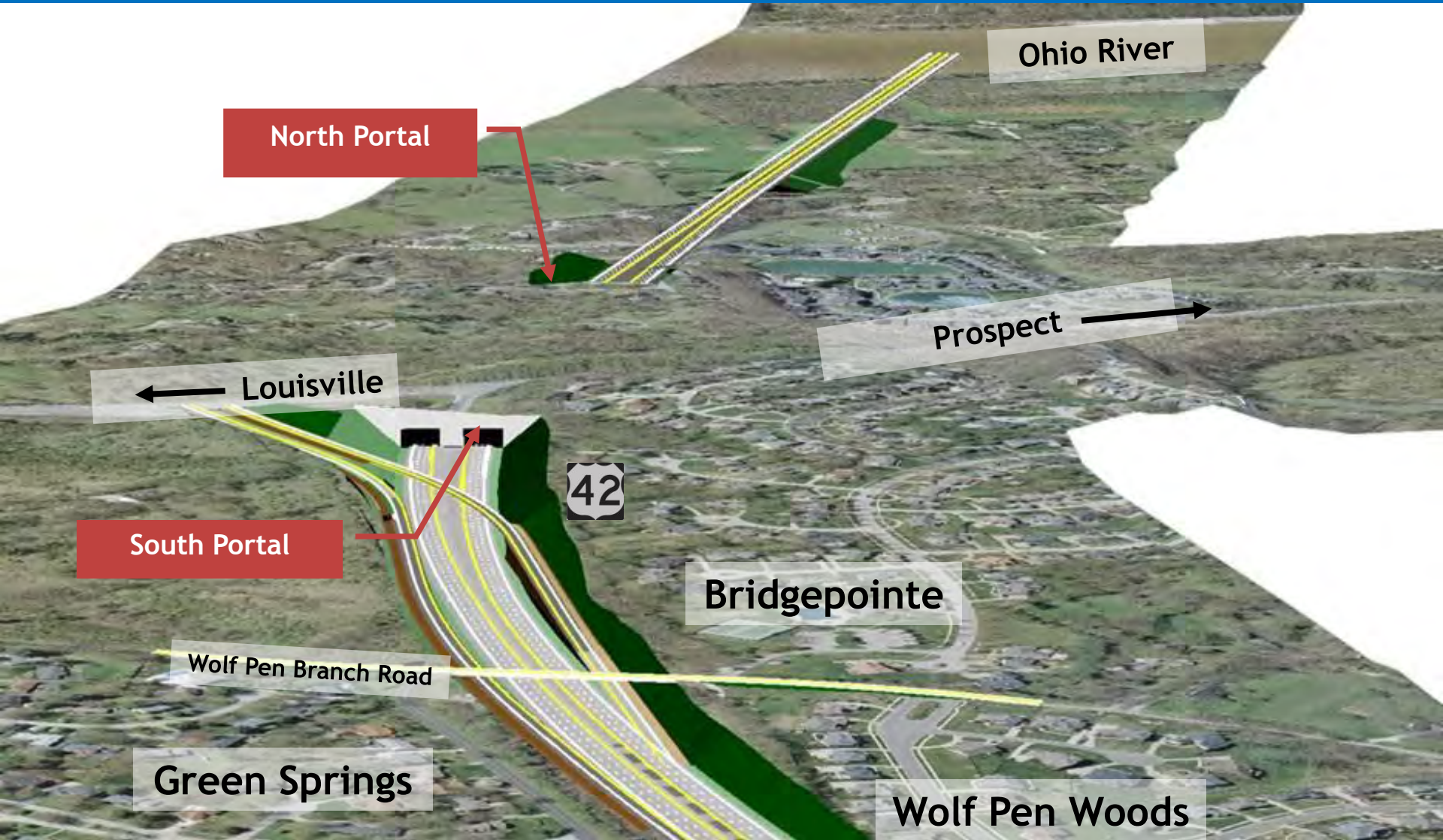
- Context Sensitive Solutions
- Historic Resources
- Tunnel Construction
- Blasting Restrictions
- Wellhead Protection Measures
- Shared-Use Path



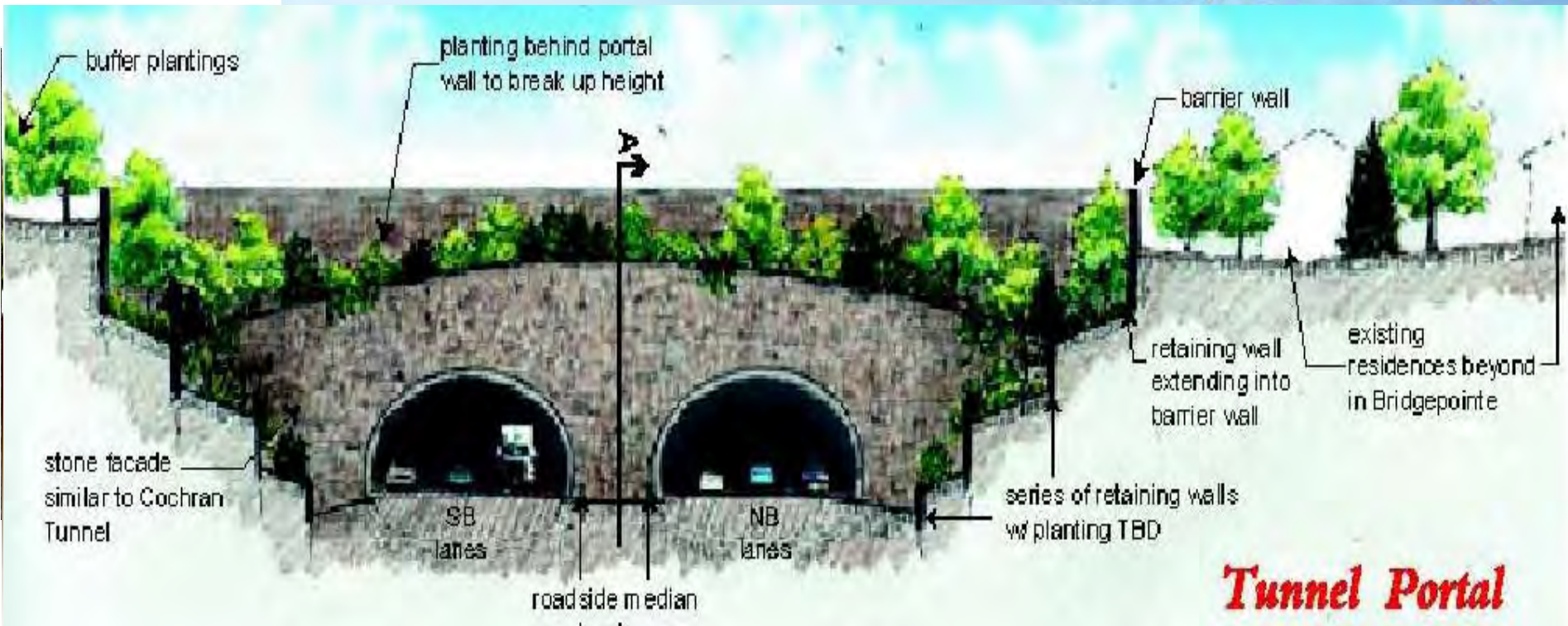
Kentucky East End – Section 4



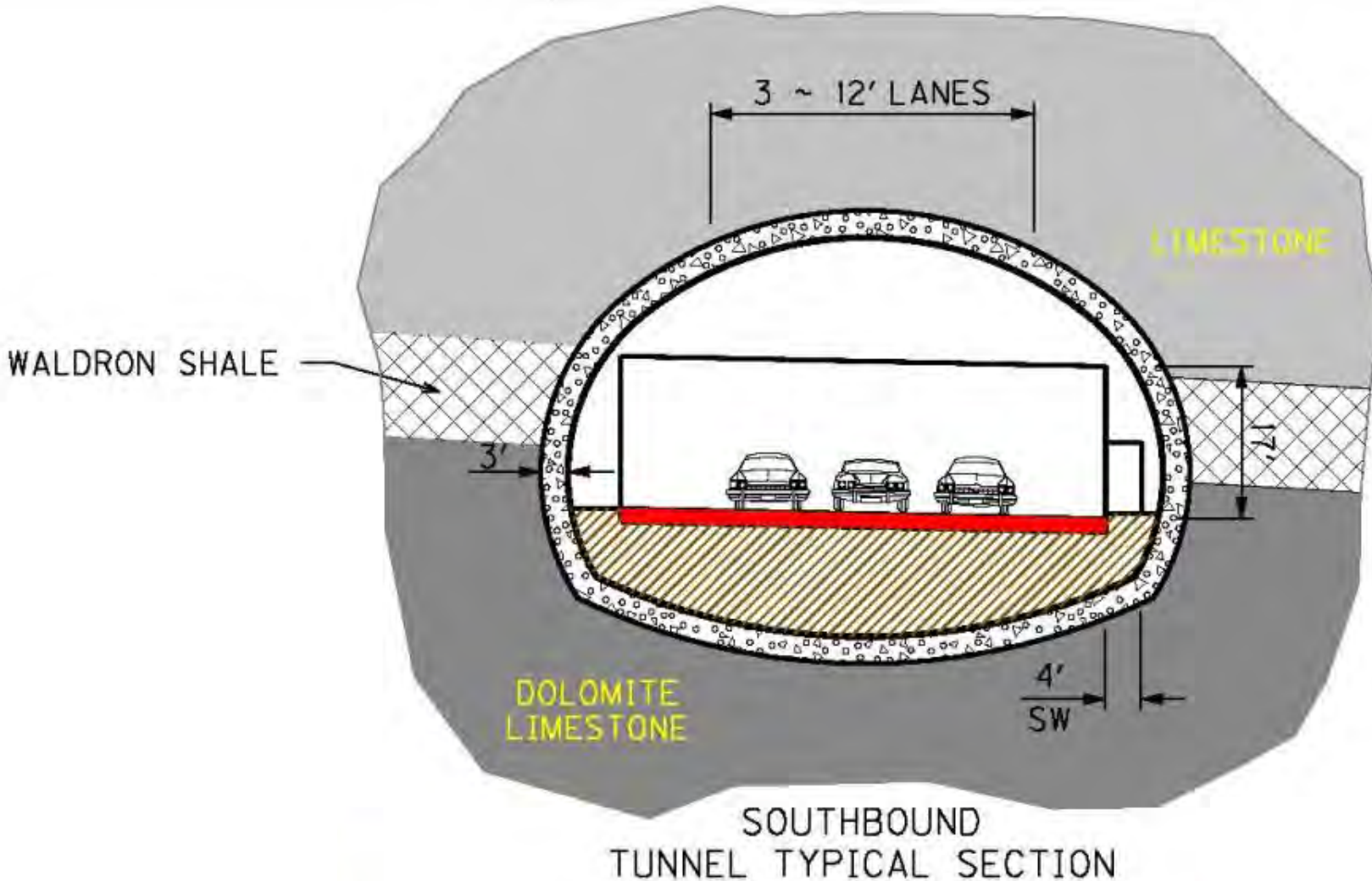
Kentucky East End – Section 4



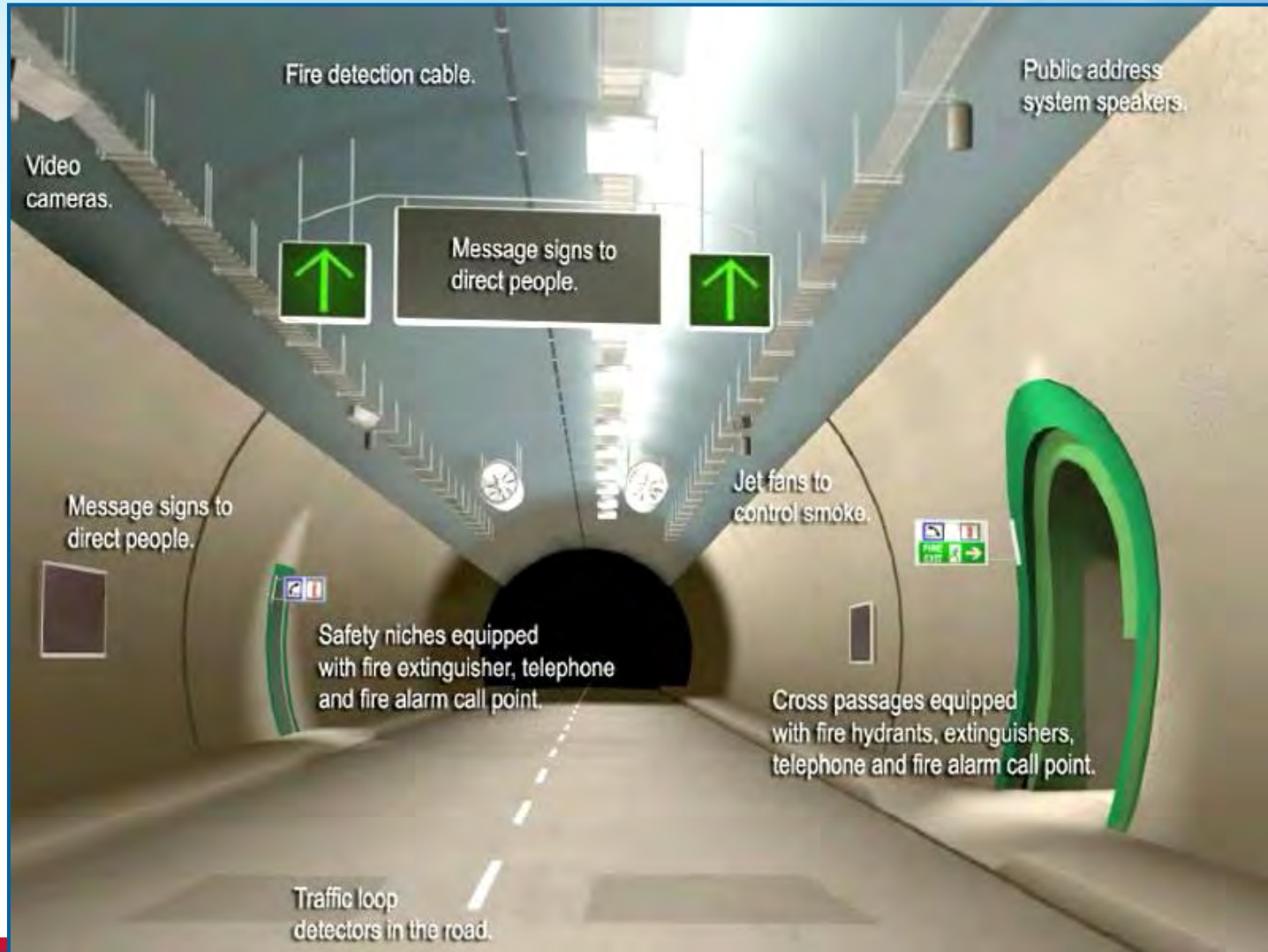
Ramp A Bridge



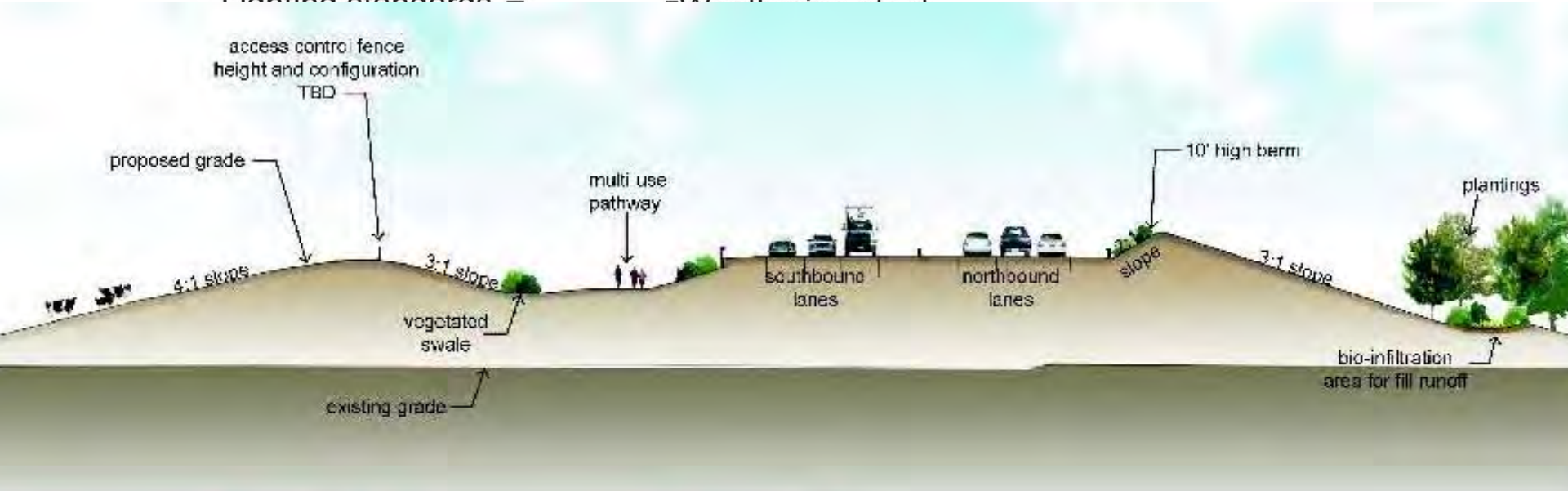
Weathering Steel Box Girders



Tunnel Basics



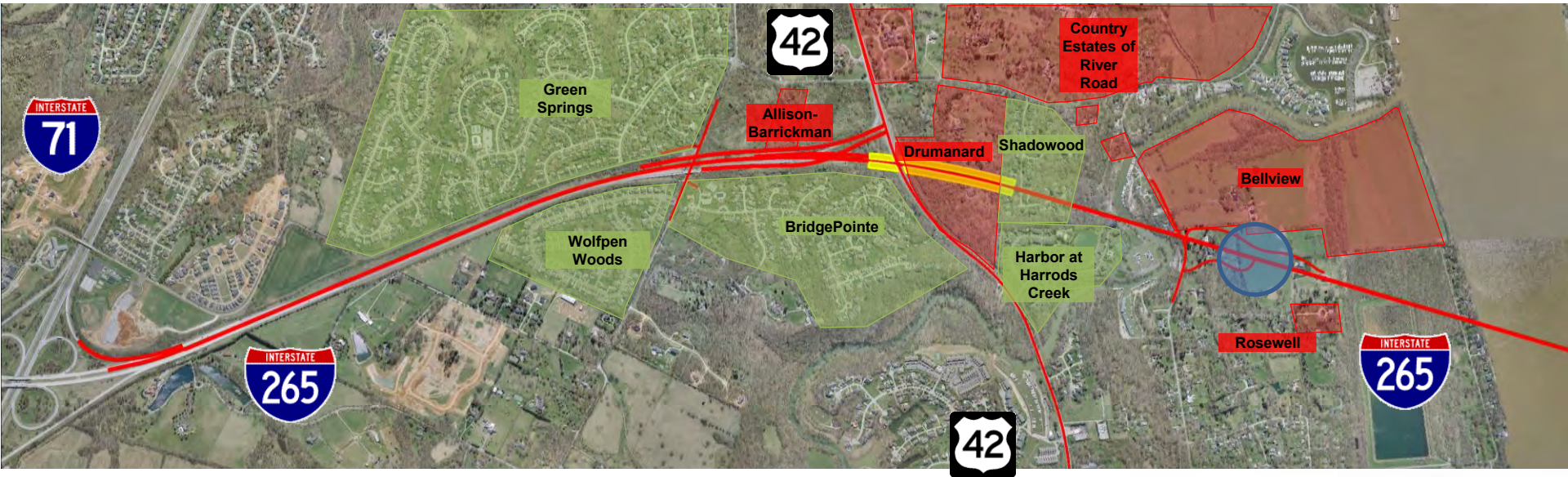
Lighting standards –



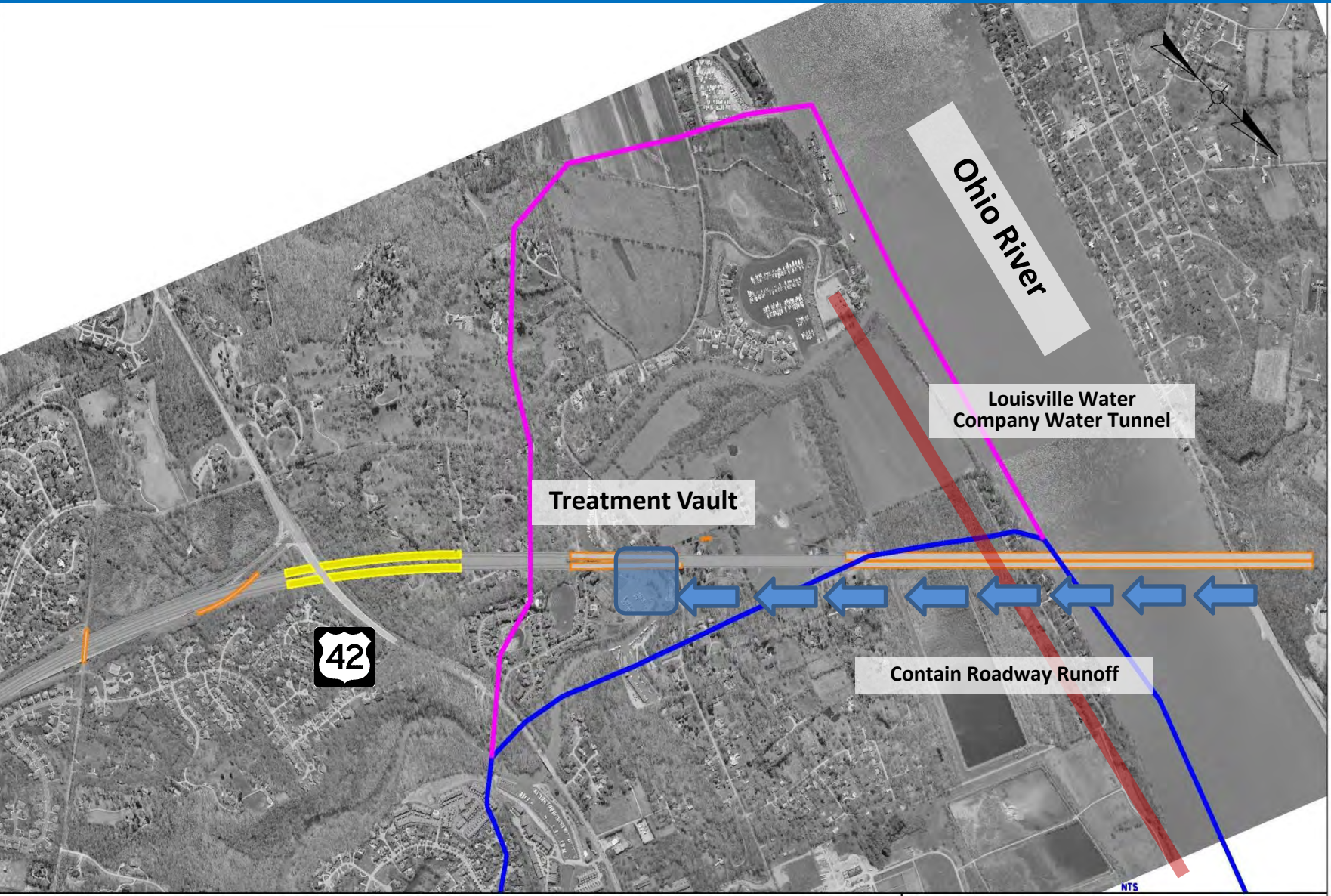
HARROD'S CREEK View from Marina in The Harbor at Harrod's Creek



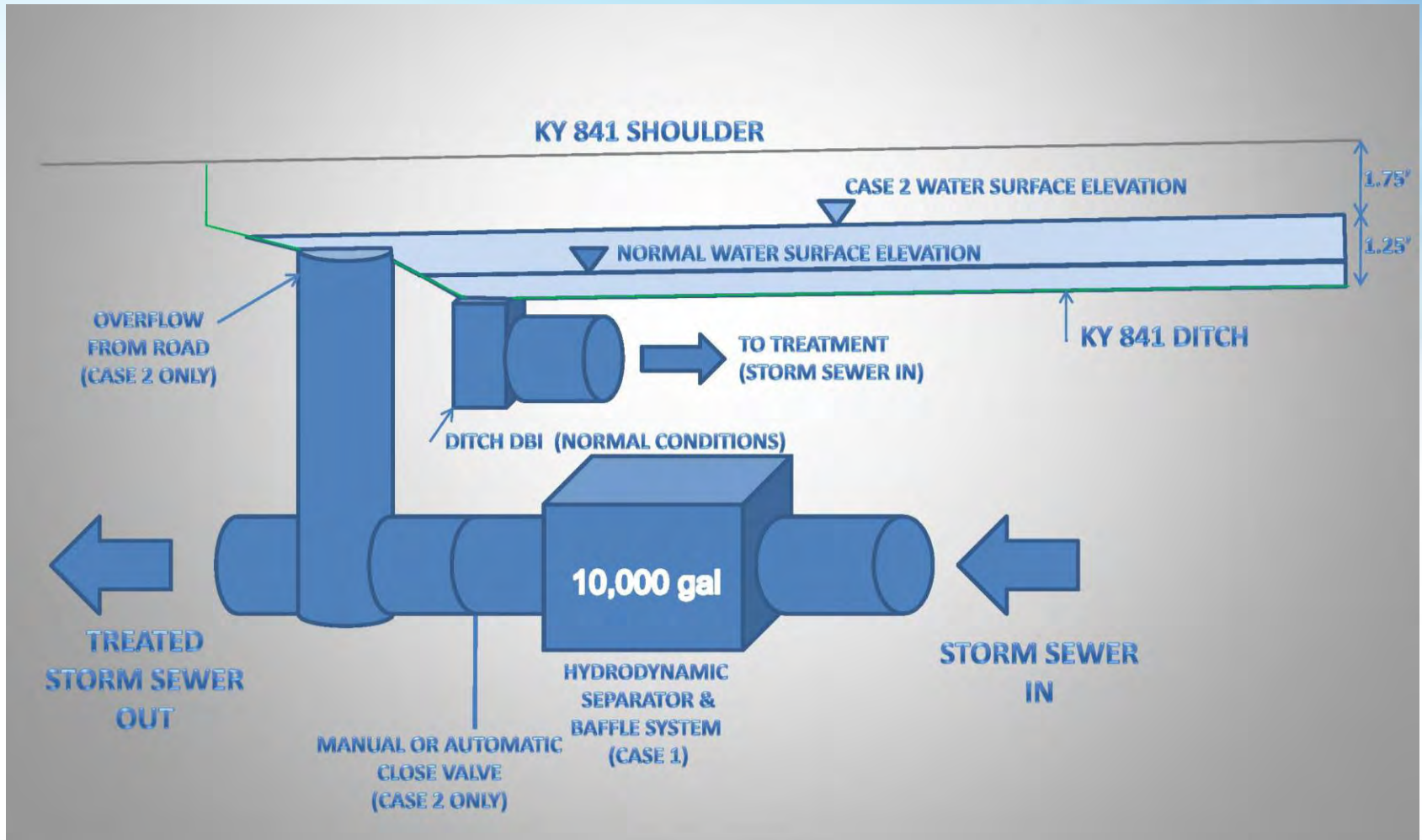
Kentucky East End – Section 4



Kentucky East End – Section 4



Storm Water Treatment Schematic



Kentucky East End – Section 4

Common pier, enclosed concrete box girder and bridge piers (see Ohio River Bridge Drawings, SDC5)

Weathering steel I-girders

Lighting standards, pedestrian rail, and parapet wall to match Ohio River bridge

Oval wall piers with arched opening and cantilevered shape

Transylvania Beach Road



Major Construction Items

- Excavation - 2.5 Million Cu. Yds.
- Embankment - 800,000 Cu. Yds.
- Storm Sewer Pipe - 18,000 linear feet
- Noise Wall/Safety Wall - 115,000 Sq. Ft.
- Retaining Wall - 300,000 Sq. Ft.
- 1900 Ft. – 8 span Steel I-Girder Twin Bridges
- 1100 Ft. - 5 Span Steel Plate Box Girder Twin Bridges
- 800 Ft. – 3 Span Curved Steel Plate Box Girder Bridge

Geotechnical Data

- Roadway Geotechnical Report
- Preliminary Tunnel Geotechnical Directional Drilling Investigation
- Approach Structure Geotechnical Investigation

Right of Way Acquisition

- Total Parcels 109
- Total Offers Made 102
- Total Offers Accepted 63