

Ohio River Bridges Project



What Is The Project?

The Louisville-Southern Indiana Ohio River Bridges Project is a “priority” national transportation project which addresses long-term, cross-river transportation needs in Louisville, Ky., and Southern Indiana. It is one of the largest transportation projects in the country and will result in safer travel, less congestion and improved access to destinations in the region. Construction is scheduled to begin in August 2012 with the entire project scheduled for completion in 2022.



The Project's Six Sections

1. The Kennedy Interchange (aka Spaghetti Junction) will be reconfigured to alleviate congestion and improve safety and access.
2. A Downtown Bridge will be constructed with six lanes of northbound traffic on I-65. The Kennedy Bridge will be revamped to handle southbound traffic only.
3. The Clarksville/Jeffersonville area of I-65 will be reconfigured to connect to the new Downtown Bridge.
4. The Kentucky East End Approach will be constructed from the Gene Snyder Freeway (KY-841) to the East End Bridge; this includes a 2,000-foot tunnel under the historic Drumanard Estate.
5. An East End Bridge will be built connecting Kentucky to Southern Indiana on the east side of the metro area.
6. The Indiana East End Approach includes a new four-mile highway leading to the East End Bridge.



The new Downtown Bridge will be constructed between the Kennedy Bridge and the Big Four Bridge.

Where Are We In The Process?

Indiana and Kentucky formed the Louisville and Southern Indiana Bridges Authority in 2010 to investigate primary funding for the project. They are examining numerous options, which include federal funding, bonding, public-private partnerships and tolling.

In early 2010, Kentucky issued \$100 million for the project to formally start the right-of-way process. Indiana and Kentucky are both funding and overseeing design work, property acquisition and historic preservation and mitigation work.

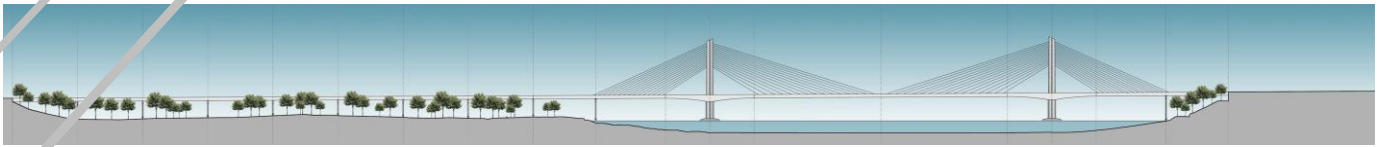
How Much Will It Cost?

The updated financial plan has the project estimated at \$4.1 billion, which takes into account inflation.

Indiana Gov. Mitch Daniels, Kentucky Gov. Steve Beshear and Louisville Mayor Greg Fischer have recommended exploring more than \$500 million in cost-saving options that require reducing many design elements of the project, including:

- Rebuilding the Kennedy Interchange in the existing location rather than moving it south
- Reducing the East End Bridge, roadway and tunnel from six lanes to four lanes, with the option to add two lanes later if traffic demand warrants
- Completing the Big Four Bridge pedestrian walkway and bike path as an alternative to including pedestrian and bike paths on the new Downtown Bridge

The Governors and Mayor also believe that any tolling required to help finance the project should be limited to the new East End Bridge and the new and renovated I-65 bridges downtown.



East End Bridge: The elevation of the Kentucky shoreline (left) is significantly lower than Indiana's.

Who Oversees The Project?

The governors of Kentucky and Indiana appointed the Louisville and Southern Indiana Bridges Authority, whose primary tasks are oversight of the project and funding for the project. The day-to-day management of the project is overseen by a Bi-State Management Team, comprised of representatives from the Kentucky Transportation Cabinet, the Indiana Department of Transportation and the Federal Highway Administration.



The East End Bridge has two towers in the median with cables giving it a sailboat appearance.

About the Project

The Ohio River Bridges Project solidifies the future of Louisville and Southern Indiana as one of America's vibrant and thriving transportation and

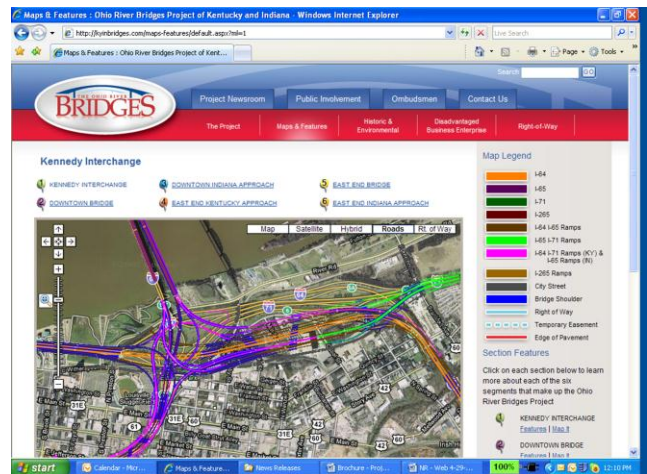
economic centers. Upon its completion, the region will be better positioned to sustain planned growth and attract new and better jobs.

The Record of Decision to build the bridges and reconfigure Spaghetti Junction was made in 2003 by the Federal Highway Administration after an exhaustive environmental impact analysis. This project adheres to requirements for both transparent public involvement and commitments to ensure appropriate mitigation, planning and accommodations for environmental, historic and community resources.

Where Can I Get More Information?

www.kyinbridges.com is the Project's Web site and serves as a vast repository of information ranging from the Record of Decision to the latest news releases. One Web feature worth exploring is the interactive mapping function, which merges the project's highway plans with Google Maps. Viewers can zoom in tight to see where the lanes will be built, as well as right-of-way boundaries.

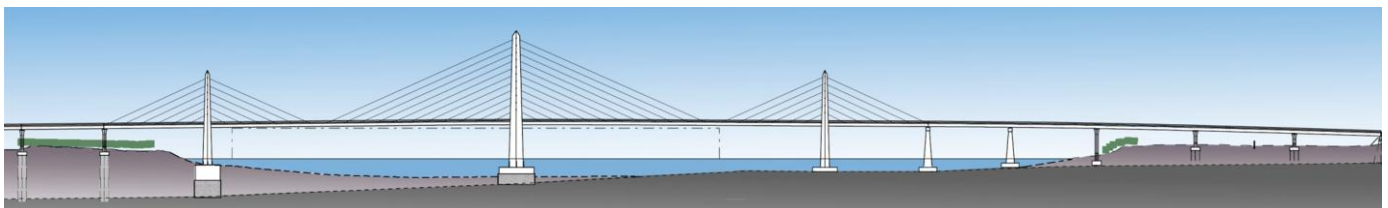
Need more information?



www.kyinbridges.com has detailed maps of all sections of the project including Spaghetti Junction, shown above.

Contact:

John Sacksteder
 Project Manager
 Community Transportation Solutions
jsacksteder@ctsgec.com
 (502) 394-3840



Downtown Bridge: Kentucky shoreline on left.