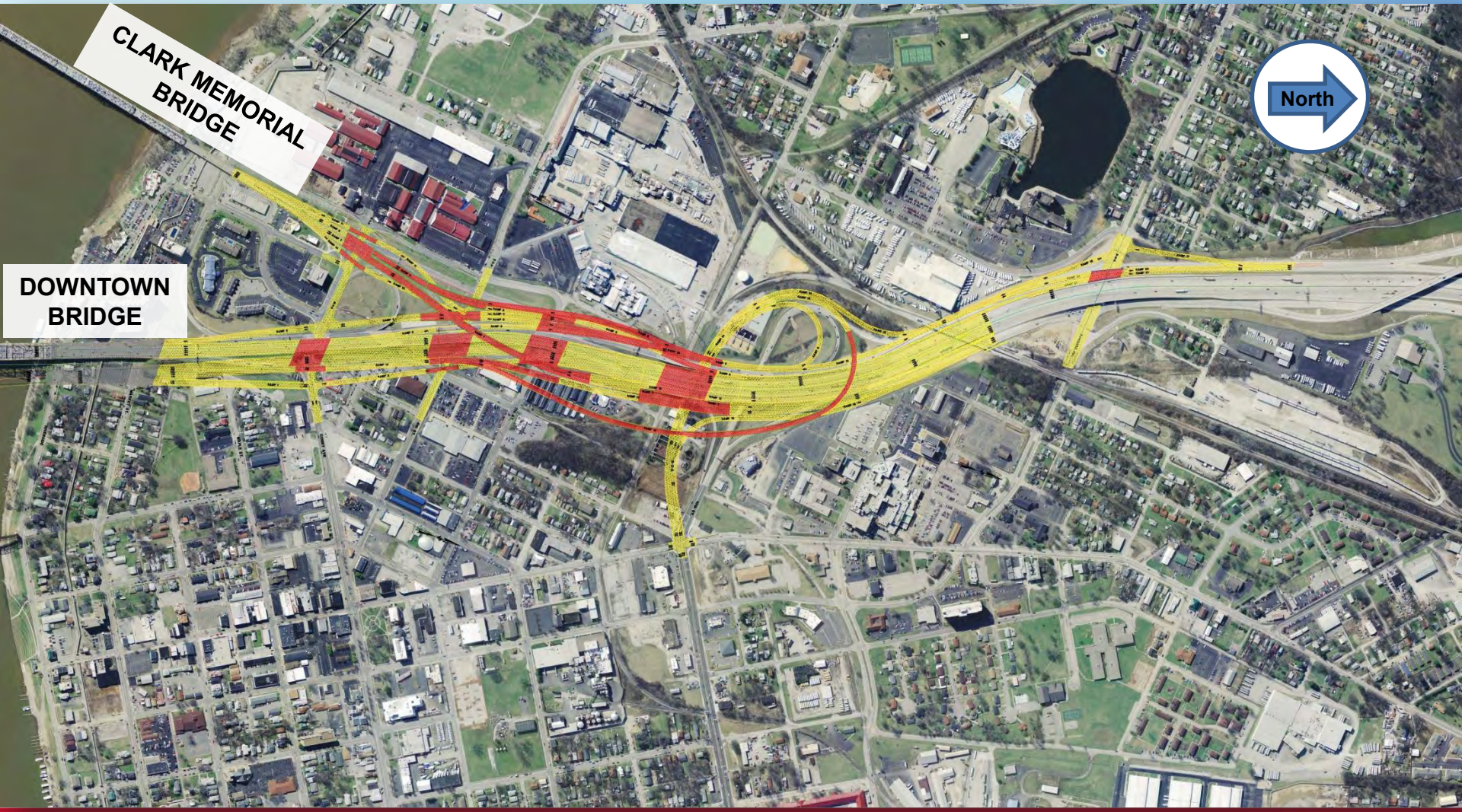




# Aerial

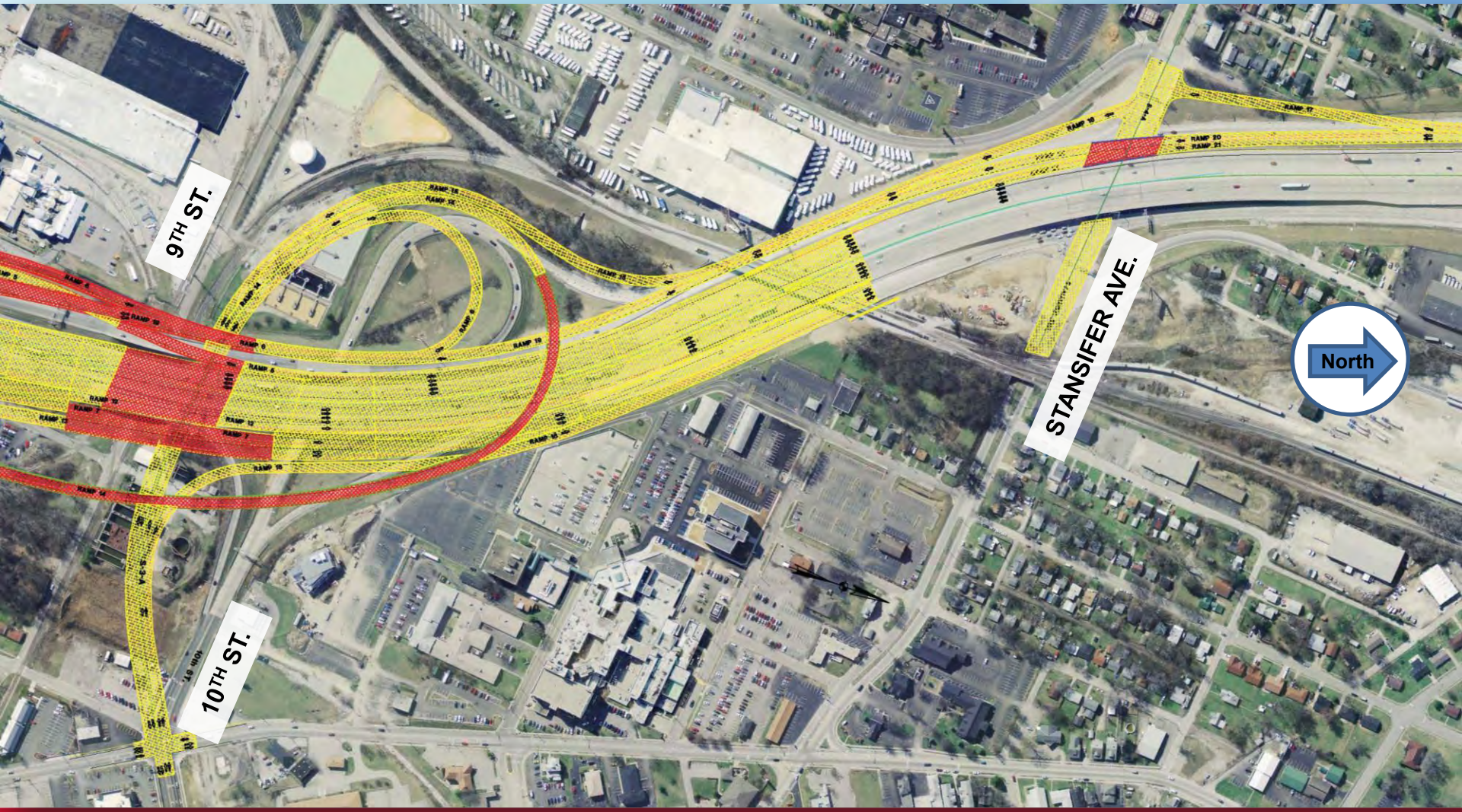


CLARK MEMORIAL  
BRIDGE

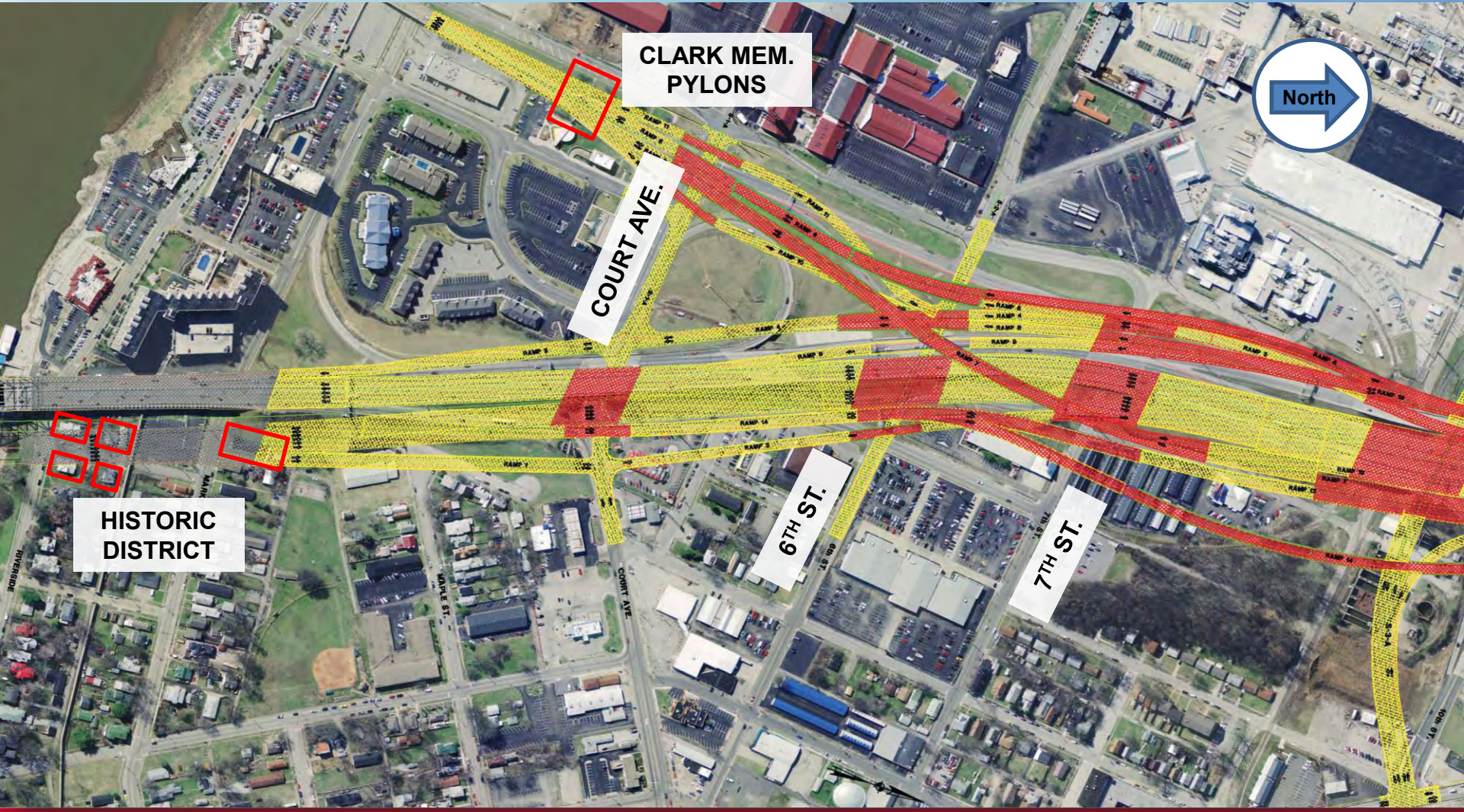
DOWNTOWN  
BRIDGE



# Aerial – Northern Half



# Aerial – Southern Half



# Local Connectivity



**US 31 – Court Ave. Intersection**

**Looking North**



**6<sup>th</sup> Street near Broadway Ave**

**Looking West**

# Clark Memorial Historic Pylons



**US 31 at Historical Pylons**

**Looking South**

**Historical Pylon**

**Looking Southeast**

# Bridges

## 20 Total Bridges

- 5 Mainline Bridges
- 2 Flyover Bridges
- 8 Frontage Ramp Bridges
- 2 CD Ramp Bridges
- 3 Other Ramp Bridges

# Roadway

- Mainline – 8.4 lane miles
- Ramps – 4.6 lane miles
- Local Streets – 2.8 lane miles

# Major Quantities

- Earthwork: 971,000 CY
- Concrete: 657,000 CY
- Pavement: 353,000 SY
- Beams: 71,000 LFT
- Steel Reinforcing: 10,933,000 LBS
- Piling: 156,500 LFT
- Retaining Walls: 288,000 SFT