



The Louisville - Southern Indiana  
Ohio River Bridges Project  
(LSIORBP)

- February 9, 2011 - Notice of Intent for preparation of SEIS
- May 26, 2011 - Draft Environmental Analysis Methodology
- May 26, 2011 - Draft Coordination Plan
- June 3, 2011 - Draft Purpose and Need document
- August 10, 2011 - Draft Range of Alternatives document
- November 10, 2011 - SDEIS approved by FHWA
- November 25, 2011 - SDEIS Notice of Availability advertised in the Federal Register
- December 19 & 20, 2011 - Public Hearings
- January 9, 2012 - Conclusion of Public Comments

## 106 (Historic) Consulting Parties

- June 1, 2011 - Introduction Meeting
- September 29, 2011 - Identification Meeting
- November 18, 2011 - Effects Meeting
  
- January 27, 2012 - Mitigation Meeting Scheduled (Draft MOA)
- February 10, 2012 - Deadline for 106 Comments

## 2003 FEIS Purpose and Need Reevaluated

**Purpose:** To improve cross-river mobility between Jefferson County, Kentucky, and Clark County, Indiana.

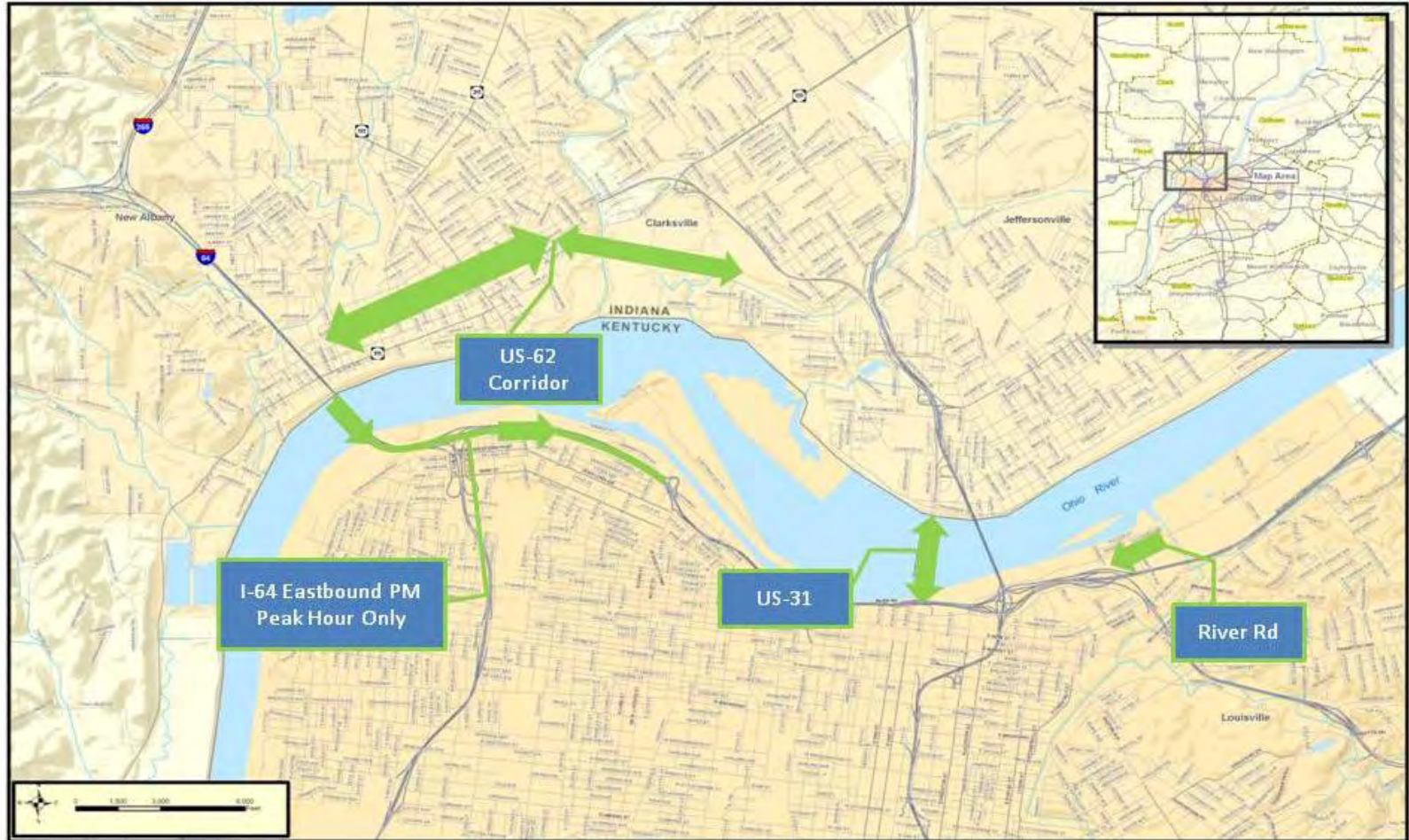
### Factors that demonstrate the Need:

- Inefficient Mobility
- Traffic Congestion
- Traffic Safety
- Inadequate Cross-River Transportation System Linkage
- Locally Adopted Transportation Plans

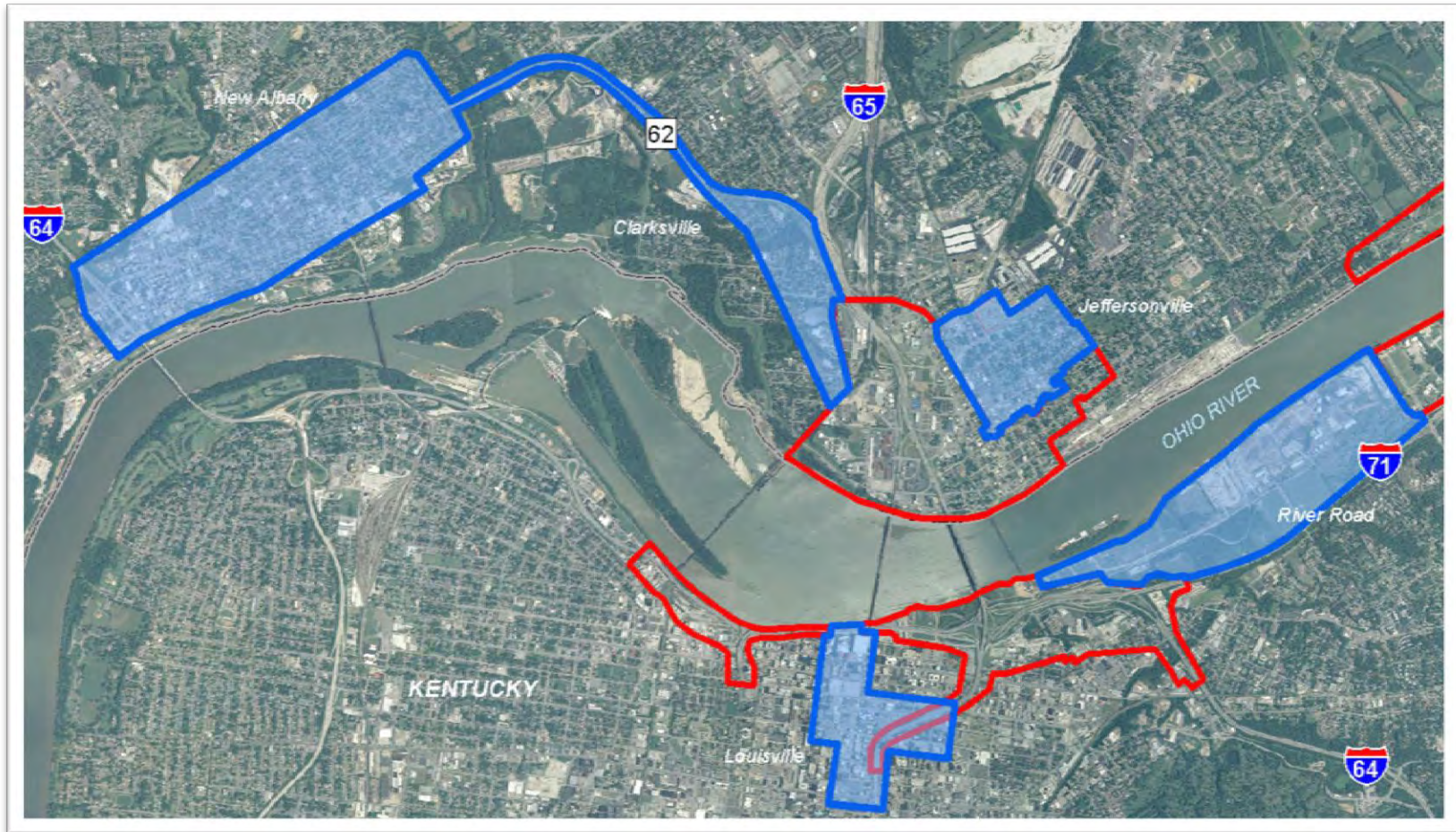
# SDEIS Summary

- All Alternatives Reevaluated
  - No Action
  - FEIS Selected Alternative
  - Modified Selected Alternative
- Cost/Financial Feasibility Studied
  - Tolling would be required

## Changes In Travel Patterns (Modified Selected Alternative) From Tolling



# Historic Resources



## Environmental Justice

- No displacements in key components of E.J. neighborhoods
- No disproportionate or negative impacts to E.J. users of the Ohio River bridges from the build alternatives or from tolling

- Natural & Human Environment Reevaluated
  - No new issues identified
  - Development has reduced Natural Environment  
i.e - wetlands, wildlife habitat
  - Commercial & Residential Relocations Reduced
  - Reduced Acreage from Parks

- Cultural Resources
  - No new historical properties in footprint
  - Additional properties considered for effects because of passage of time or tolling

# What's Next

- SDEIS Comment Period - January 9, 2012
- 106 Comment Period - February 10, 2012
- Final SFEIS & Record of Decision - Spring 2012